



Innovative PVC Systems  
-FLEX-  
www.prestigediy.com

## The FLEX Program...

A Premium System without the Frills!

# Installation Instructions

## Square Columns

(2-Pcs. Column)

**Thank you for purchasing a Prestige FLEX Column.**

Your Prestige FLEX Column™ has been designed for an easy, straightforward installation. It is recommended that all products are pre-measured before installation to ensure fit around structure. The user is responsible to verify sizes are appropriate.

**NOTE:** Your Prestige FLEX Column™ is a decorative column only and is NON-LOADBEARING.

**Column Components included:** Two (2) Panels - Column Shaft

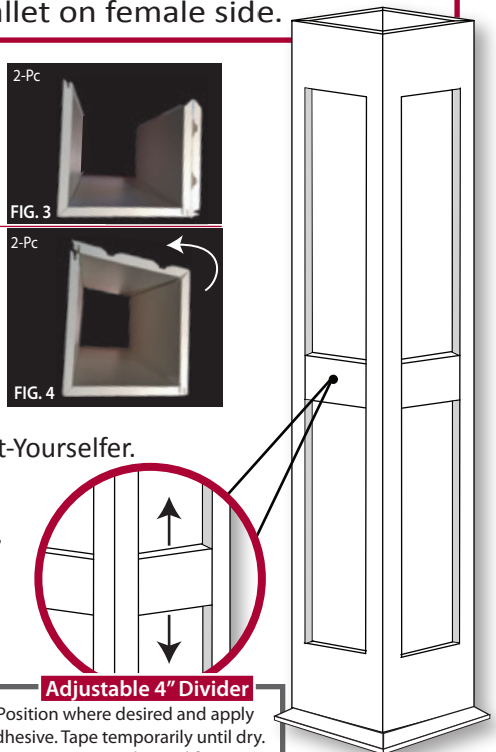
**NOTE:** PVC adhesive, Squaring Skirts & screws are NOT included. Some of the component edges may be sharp, so please handle with care.

1. Measure height and cut column shaft 1/4" shorter for expansion/contraction. Cut from one or both ends on square recessed panels to balance reveals, as desired.

- a) Apply adhesive to notched V-groove to form 1st corner.
- b) Pre-glue the second 2-pc folding panel and insert male into female joint using rubber mallet on female side.

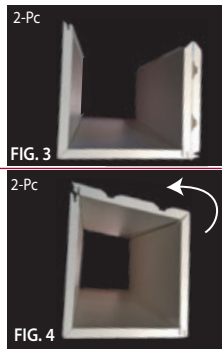
2. Position the 3 sided column around structural post. (FIG. 3)

3. Fold last female corner to complete column. (FIG. 4)



**Adjustable 4" Divider**  
Position where desired and apply adhesive. Tape temporarily until dry. Non-corrosive mechanical fasteners may be used.

**2 pc. Fold**  
Recessed Panel - Square



**Prestige FLEX Columns** allow for a Fast, Simple and Easy Installation for any Do-it-Yourselfer.

**For Best Practice when installing,** it is recommended to use the optional 1 pcs, 1" Squaring Skirt. (FIG. 5)



Innovative PVC Systems  
-FLEX-  
www.prestigediy.com

## The FLEX Program...

A Premium System without the Frills!

# Installation Instructions

## Tapered Columns

(4-Pcs. Column)

**Thank you for purchasing a Prestige FLEX Column.**

Your Prestige FLEX Column™ has been designed for an easy, straightforward installation. It is recommended that all products are pre-measured before installation to ensure fit around structure. The user is responsible to verify sizes are appropriate.

**NOTE:** Your Prestige FLEX Column™ is a decorative column only and is NON-LOADBEARING.

**Column Components included:** Four (4) Panels - Column Shaft

**NOTE:** PVC adhesive, Squaring Skirts & screws are NOT included. Some of the component edges may be sharp, so please handle with care.

1. Measure height and cut column shaft 1/4" shorter for expansion/contraction. **For best practice, only cut panels from the bottom.** If purchasing optional Prestige Columns Skirts, ONLY the bottom skirts may be re sized for shorter column, not the top.

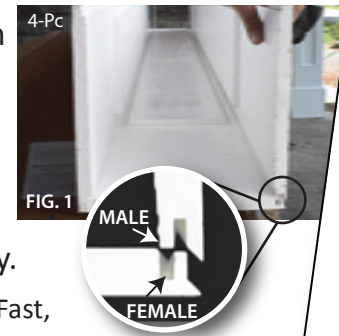
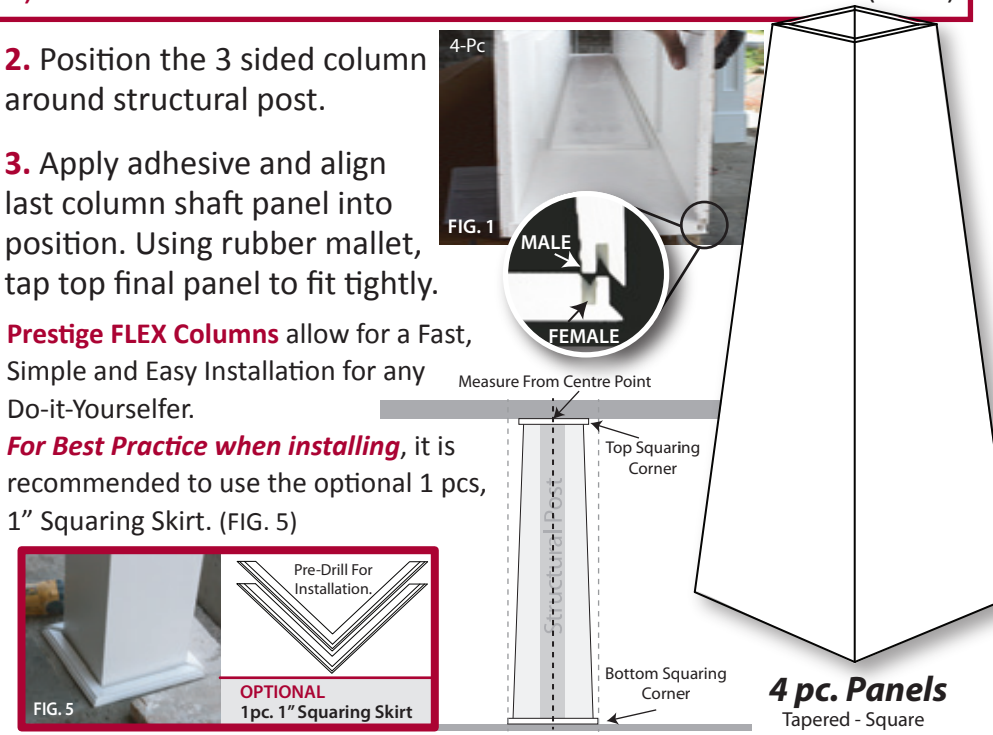
- a) Assemble 3 shaft sides, with 1 shaft w/female "smart lock" laying on cardboard box apply PVC adhesive down lock joints of either side. (FIG. 1)
- b) Press a male smart lock shaft into matched female side. (FIG. 2)

2. Position the 3 sided column around structural post.

3. Apply adhesive and align last column shaft panel into position. Using rubber mallet, tap top final panel to fit tightly.

**Prestige FLEX Columns** allow for a Fast, Simple and Easy Installation for any Do-it-Yourselfer.

**For Best Practice when installing,** it is recommended to use the optional 1 pcs, 1" Squaring Skirt. (FIG. 5)



**4 pc. Panels**  
Tapered - Square